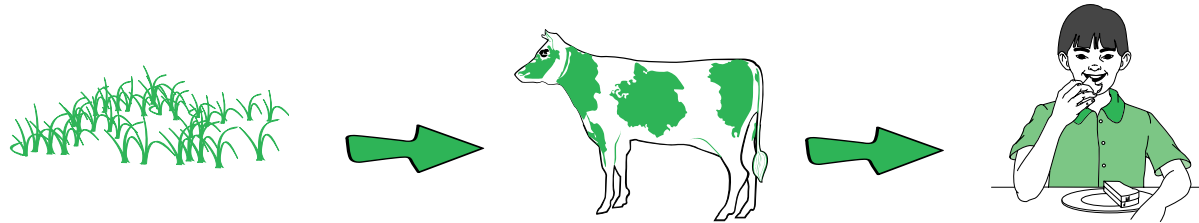


Food Chains: Who Eats Whom?

Read the passage and study the pictures. Use the information to answer the questions.

Every time you run, jump, or throw a ball, you are using up energy in your body. A **food chain** shows how each living thing gets its energy. For example, a simple food chain links grass plants, cows (that eat the grass), and people (that eat the cows). Each link in the food chain is food for the next link. A food chain always starts with a plant and ends with an animal.



Now it's your turn to make a simple food chain using animals and plants that live in the sea.

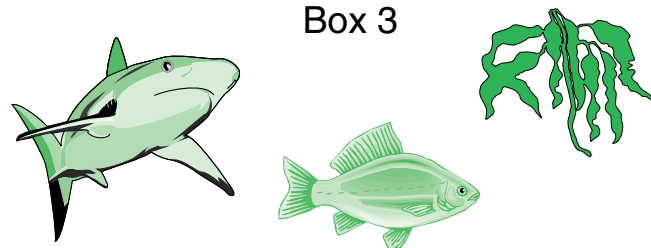


Box 1

Box 2

Box 3

- 1 Which of these might go in Box 1?
- 2 Which of these might go in Box 2?
- 3 Which of these might go in Box 3?

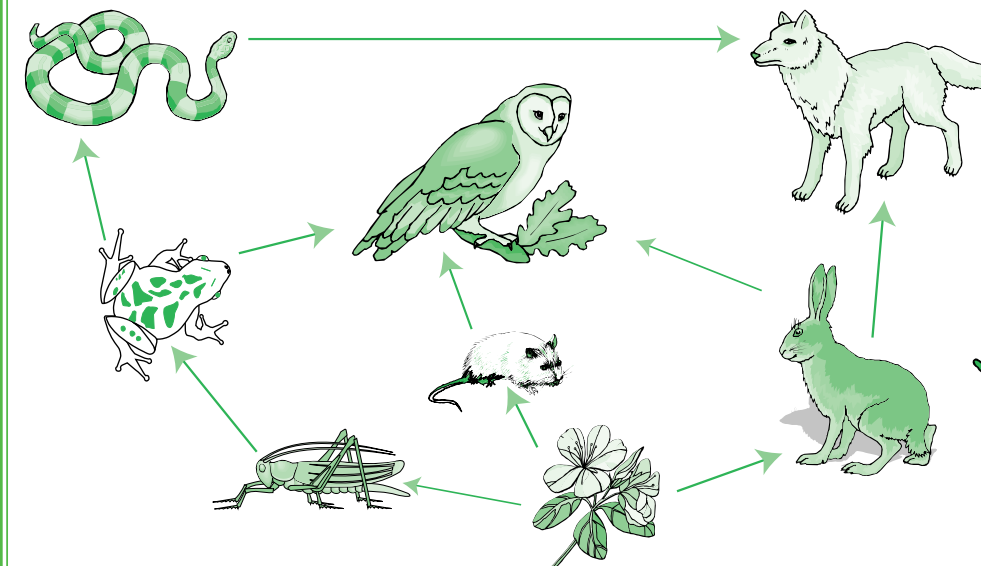


Plants use the Sun's energy to produce food, so they are called **producers**. Animals have to consume (eat) food to get energy, so they are called **consumers**. The last animal in a food chain is called the **top consumer**.

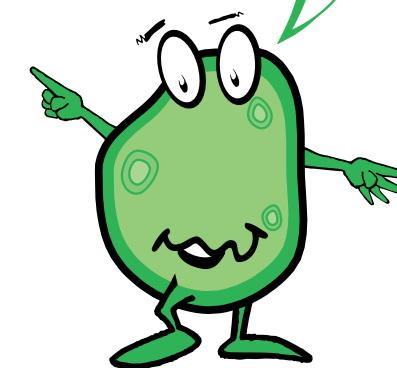
- 4 Which of these is a producer? rose bush chipmunk monkey
- 5 Which of these is a consumer? owl maple tree apple tree
- 6 Which of these might be top consumer? human chicken grass

Study the diagram. Find the word that correctly completes each sentence.

In nature, different food chains are connected together. This is called a **food web**. The drawing below shows a food web in a forest community.



Remember! The arrows in the food chain and food web diagrams show the direction in which energy moves.



- 7 True or False? The wolf is a top consumer in this food web.
- 8 In this food web, the plant is the ■.
- 9 In this food web, the snake is a ■.
- 10 The food web shows that rabbits and mice get their energy from ■.
- 11 The food web shows that owls get energy from frogs, mice, and ■.
- 12 True or False? Rabbits are consumers. They get energy by eating wolves and owls.

Answer Box

A producer	B False	C rose bush	D 	E rabbits	F owl
G human	H 	I True	J plants	K 	L consumer



Use library books or the Internet to learn about the types of plants and animals in your area. Make a poster of a possible food web using photographs and drawings.

